

NAWS CHINA LAKE PAINTBALL GEAR PRICES

Kit Rental

Per Day

Active Military E1-E6:	\$5	\$7	\$15/hr (min \$30)
Active Military E7 and above:	\$10	\$12	\$25/hr (min \$50)
Active Military Family Members:	\$10	\$12	\$25/hr (min \$50)
All Others:	\$13	\$22	\$40/hr (min \$80)

Additional bottles of air are \$5 each/day.
A rented bottle can be exchanged/refilled for free.

PAINTBALL FIELD RENTAL

without MWR Referee:

(per hour of play)

Only qualified referees can rent the field.

with MWR Referee:

(per 1 hour of play, 2 hours minimum)

Must be arranged at least 10 business days ahead

Field may be reserved between sunrise and sunset. No play is permitted at night.

PAINTBALLS

Bag of 500 rounds: \$13

Box of 2000 rounds: \$45

Purchase of MWR paint is required with
rental of MWR Markers.

Gear can be rented at the

Community Recreation Center

When the they are not open, gear
may be returned to:

Liberty Rec Stop: All Week 12-9pm

Golf Pro Shop: All Week 7am-6pm

Paintball Player Kit Includes

Paintball Marker

Ball Hopper

Air Tank

Face Mask

Barrel Squeegee*

Barrel Sock*

Kit Storage Bag*

**As supply is available*



NAWS CHINA LAKE PAINTBALL PARTY PRICES

PACKAGES

MILITARY COMMANDS

ACTIVE DUTY AND FAMILY

CIVILIANS

FOOD OPTION

Up to 8 equipment sets
One MWR Referee
4,000 rounds of paint
2 hours of play

\$140

\$220

\$270

Feeds 10
+\$150
2 folding tables
12 folding chairs

Up to 16 equipment sets
One MWR Referee
10,000 rounds of paint
3 hours of play

\$260

\$350

\$480

Feeds 20
+\$300
5 folding tables
24 folding chairs

Up to 32 equipment sets
Two MWR Referees
20,000 rounds of paint
4 hours of play

\$500

\$680

\$950

Feeds 40
+\$600
10 folding tables
50 folding chairs

*Parties must be arranged at
least 10 business days ahead*

*Parties may be arranged
between sunrise and sunset.
No play is permitted at night.*

Additional
Equipment sets

\$5 each

Additional
Hour of Play

\$20/\$40

Additional
500 Rounds

\$13

Additional
2000 Rounds

\$45

Additional
Meals

\$10

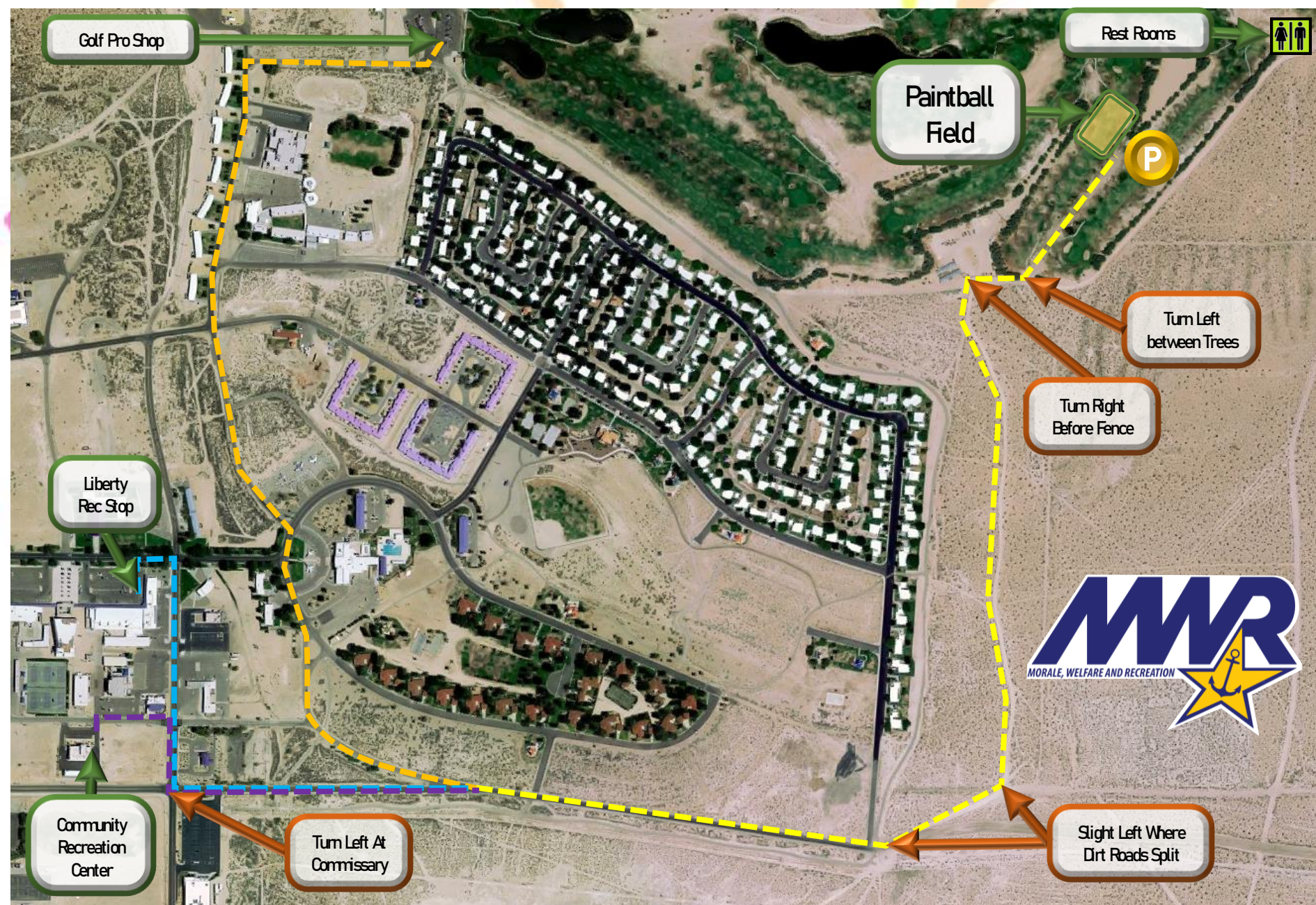
Endless free HPA refill for anyone using MWR equipment.
People using personal equipment may rent an HPA tank at \$5 a
day, also with endless refill.

Personal HPA tanks may have unlimited refills for \$2 a day.

MWR does not have CO2 refill capability.



NAWS CHINA LAKE PAINTBALL FIELD DIRECTIONS



NAWS CHINA LAKE MWR PAINTBALL SAFETY BRIEF

Paintball Safety Brief

- No wrestling, fighting, grabbing or other horseplay allowed.
- All players must be sober; no alcoholic beverages permitted during play.
- Paintball markers are either in the field, at the staging area, or in a car.
- Report any injuries to the referees right away.
- Masks MUST be worn at all times on the field, do not take them off for any reason. Ensure mask fits snugly on your face. Lenses should be clean when entering play.
- A single long blast of the horn/whistle starts and ends the game. Multiple short blasts means there is an emergency and all players need to exit the field.
- Avoid carrying car keys, wearing jewelry, or bringing anything not meant for paintball.
- Barrel sock or plugs must be on at all times in the staging area.

Field of Fire

- Aim only at approved target; Do not shoot referees, eliminated players, animals, or spectators. Never shoot outside the boundaries of the field or in the air.
- Chronograph limit is 280 FPS.
- No blind firing; you must be able to see where your paintballs are hitting.
- If you are unsure if you are hit or if you hit someone, call for a paint check.
- Never shoot any wildlife. If animals are seen on the field, stop the game and call for the referee.
- “Surrender rule” is at or under 10 feet. Call out “surrender” if you are less than 10 feet from a target player.
- If you are eliminated, hold the eliminated player position: stand upright, hands and marker raised above your head, walk quickly to the nearest edge of the field, and exit.

